

# DIG 3700 - 5500 - 8500 - 11000

## SUBMERSIBLE PUMPS



### TECHNICAL DATA

**Operating range:** from 12 to 240 m<sup>3</sup>/h with head up to 57.5 metres.

**Pumped liquid:** rain water, ground water, sandy water from construction site, water containing abrasive particles in general.

**Free passage of solids:** 6 mm.

**Liquid temperature range:** from 0 °C to 35 °C.

**Maximum immersion depth:** 20 metres (with cable of appropriate length).

**Motor protection class:** IP 68

**Insulation class:** F

**Standard voltage:** 220-240 V - 50Hz single-phase.

380-415 V - 50Hz three-phase.

**Installation:** fixed or portable, vertical position.

Continuous service with completely or partially submerged pump.

**Power cable:** 10 metres H07RN-F. Special patented steel core reinforced tear-resistant electric cable also available on request.

### APPLICATIONS

Portable pumps, ideal for draining abrasive liquids in the field:

- Building, tunnel, or infrastructure construction sites
- Civil, for pedestrian subways and car parks
- Industrial, for process waters
- Open mines and caves
- Municipal, for emergency sandy water flooding

### CONSTRUCTION FEATURES OF THE PUMP

Pump body made of EN G.JL 200 cast iron, internally lined with high abrasion and wear resistance Nitrile (NR) rubber.

Double silicon carbide/silicon carbide mechanical seal on the pump side and carbon/alumina seal on the motor side, in oil chamber.

AISI 304 stainless steel suction grid

Delivery ND: 3" for the APT version, 4" for the MPT version

Open CRA2 650 HB chrome cast iron impeller

### CONSTRUCTION FEATURES OF THE MOTOR

Dry, asynchronous and waterproof type motor, cooled by the pumped liquid. Rotor mounted on permanently lubricated ball bearings, oversized to ensure long-term reliability and extended lifetime. Built-in thermo-ampere protection. Continuous S1 service with completely or partially submerged pump.

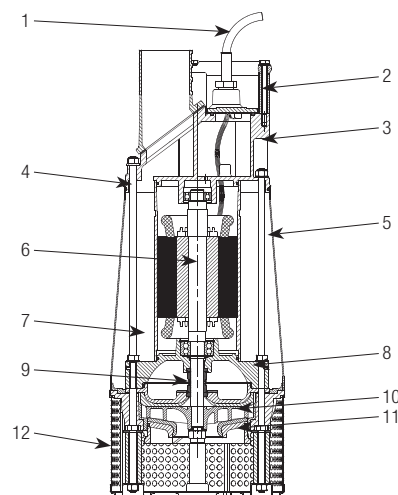
Number of poles: 2

Max starts/hour: 15

### MATERIALS

N.	PARTS*	MATERIALS
1	POWER INPUT CABLE	H07RN-F
2	HANDLE	
3	UPPER COVER	EN G.JL 200 CAST IRON
4	OR	NBR
5	EXTERNAL COOLING LINER	AISI 304 STAINLESS STEEL
6	ROTOR SHAFT	AISI 420
7	MOTOR BODY	
8	BEARING FLANGE	EN G.JL 200 CAST IRON
9	MECHANICAL SEAL	MOTOR: SILICON CARBIDE/SILICON CARBIDE PUMP: SILICON CARBIDE/SILICON CARBIDE
10	IMPELLER	CRA2 650HB CHROME CAST IRON
11	HYDRAULIC BODY	70SHORE ABRASION RESISTANCE RUBBER
12	GRID	AISI 304 STAINLESS STEEL

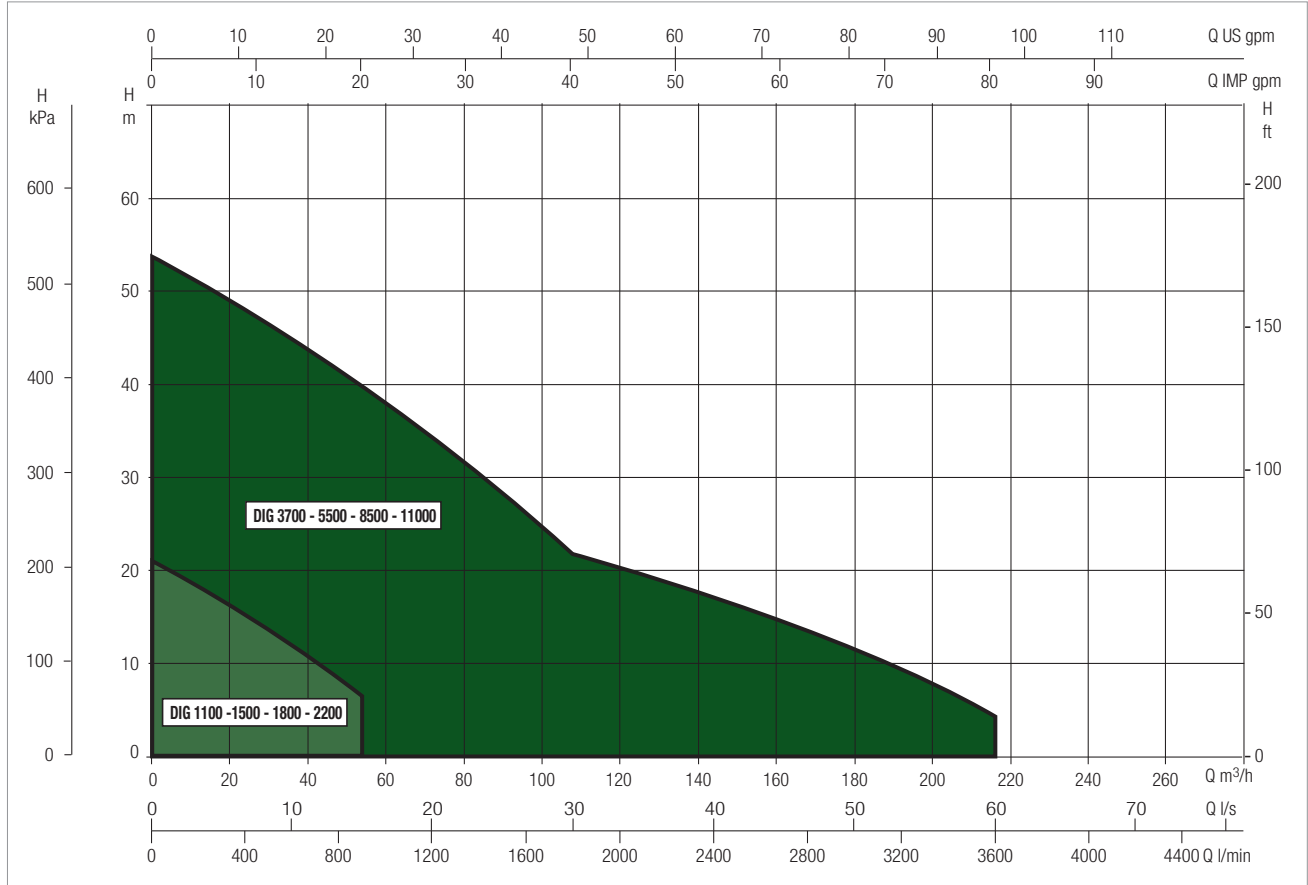
\* In contact with the liquid



### PERFORMANCE RANGE

The performance curves are based on kinematic viscosity values = 1 mm<sup>2</sup>/s and density equal to 1000 kg/m<sup>3</sup>. Curve tolerance according to ISO 9906.

### GRAPHIC SELECTION TABLE

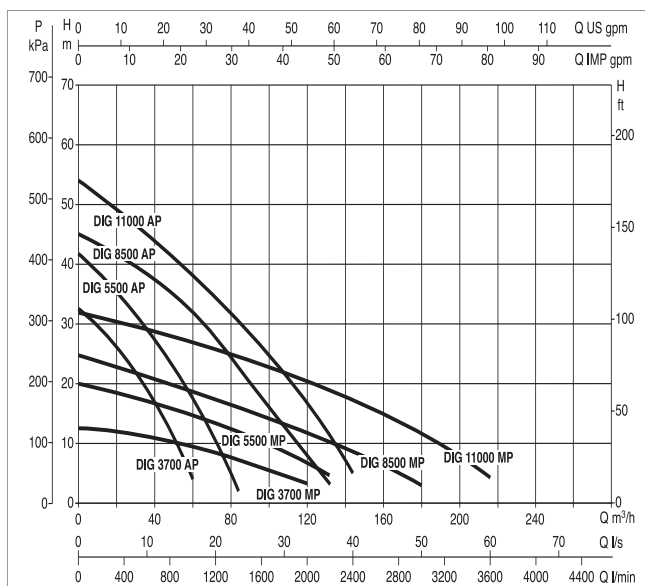
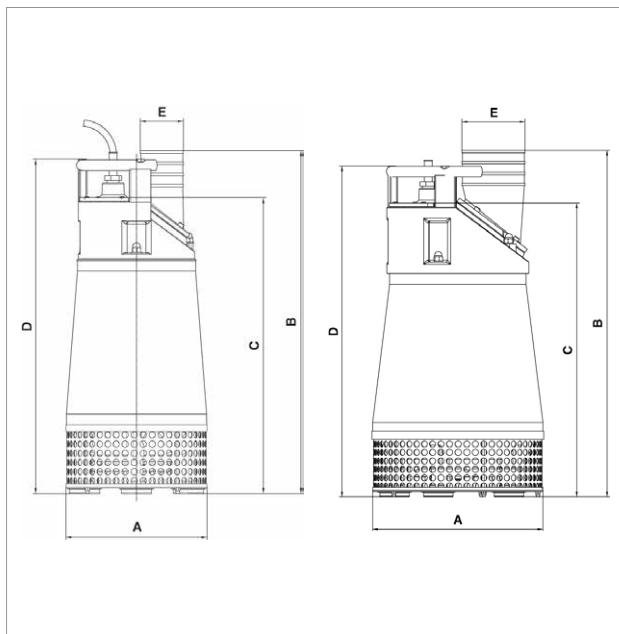


### SELECTION TABLE - DIG 3700 5500 - 8500 - 11000

MODEL	Q= m <sup>3</sup> /h																
	0	6	12	18	24	30	36	42	48	54	60	72	84	96	108	120	132
	Q= l/min																
	0	100	200	300	400	500	600	700	800	900	1000	1200	1400	1600	1800	2000	2200
DIG 3700 AP T	32.5		29.0	27.3	25.0	23.2	20.1	17.5	14.8	12.3							
DIG 3700 MP T	12.5		12.1	11.8	11.6	11.3	11.0	10.6	10.1	9.9	9.4	8.5	7.4	6.0	4.9	3.3	
DIG 5500 AP T	41.6		37.7	35.3	32.4	30.0	27.0	23.8	21.2	18.0	14.7	7.8	2.5				
DIG 5500 MP T	20.0		19.5	19.2	18.9	18.6	18.2	17.9	17.3	16.7	15.8	14.4	12.6	10.5	9.1	7.2	5.0
DIG 8500 AP T	45.0		42.8	40.3	38.1	35.8	34.3	32.2	30.1	28.3	26.2	22.4	18.3	14.6	11.6	8.6	5.4
DIG 8500 MP T	23.0		22.5	22.0	21.5	21.2	20.8	20.3	19.7	19.2	18.5	17.5	16.2	15.1	13.5	11.7	10.3
DIG 11000 AP T	58		54.0	52.0	50.5	49.0	47.5	46.0	44.0	42.0	40.0	36.0	31.0	26.0	21.0	16.0	11.0
DIG 11000 MP T	32		31.0	31.0	30.1	29.4	29.1	28.0	28.0	27.4	26.5	25.6	24.6	23.3	22.1	20.7	19.1

# DIG 3700 - 5500 - 8500 - 11000 - SUBMERSIBLE PUMPS FOR DRAINING CLEAR WATER CONTAINING ABRASIVE SUBSTANCES

Liquid temperature range: from 0 °C to +35 °C



The performance curves are based on kinematic viscosity values = 1 mm<sup>2</sup>/s and density equal to 1000 kg/m<sup>3</sup>. Curve tolerance according to ISO 9906.

MODEL	ELECTRICAL DATA				
	POWER INPUT 50 Hz	P1 MAX kW	P2 NOMINAL		In A
			kW	HP	
DIG 3700 AP T-NA	3 x 400V ~	4.2	3.7	5	7.7
DIG 3700 MP T-NA	3 x 400V ~	4.3	3.7	5	7.8
DIG 5500 AP T-NA	3 x 400V ~	7.0	5.5	7.5	12.0
DIG 5500 MP T-NA	3 x 400V ~	5.4	5.5	7.5	10.0
DIG 8500 AP T-NA	3 x 400V ~	10.4	8.5	11.4	19.0
DIG 8500 MP T-NA	3 x 400V ~	9.9	8.5	11.4	16.0
DIG 11000 AP T-NA	3 x 400V ~	13.6	11	15	22.5
DIG 11000 MP T-NA	3 x 400V ~	12.5	11	15	21.5

MODEL	A	B	C	D	E DNM	FREE PASSAGE mm	PACKING DIMENSIONS			VOLUME (m <sup>3</sup> )	WEIGHT kg
							L/A	L/B	H		
DIG 3700 AP T-NA	326	840	685	775	3"	10	600	800	1050	0.5	90
DIG 3700 MP T-NA	326	794	685	775	4"	10	600	800	1050	0.5	90
DIG 5500 AP T-NA	326	840	685	775	3"	10	600	800	1050	0.5	96
DIG 5500 MP T-NA	326	794	685	775	4"	10	600	800	1050	0.5	96
DIG 8500 AP T-NA	404	894	773	862	4"	10	600	800	1050	0.5	150
DIG 8500 MP T-NA	404	894	773	862	6"	10	600	800	1050	0.5	150
DIG 11000 AP T-NA	404	894	773	862	4"	10	600	800	1050	0.5	165
DIG 11000 MP T-NA	404	894	773	862	6"	10	600	800	1050	0.5	165